



# 5. Protection and management of the property

## 5.a Ownership

The land that makes up Teide National Park is owned by the state, municipalities and private entities. The distribution of the surface area and the percentages are illustrated in the following table:

PROPERTY	SURFACE (ha)	PERCENTAGE (%)
Municipal	17,619	92.78
State	1,367	7.20
Private	4	0.02
<b>TOTAL</b>	<b>18,990</b>	<b>100.00</b>

The table shows that the bulk of the land that constitutes Teide National Park is in public hands, with the municipalities contributing the majority of the Park.

### *Municipal property*

The following table displays the eleven municipalities that own land in the National Park in order of the amount of area that each has contributed to the Park.

MUNICIPALITY	SURFACE (ha)	PERCENTAGE (%)
La Orotava	13,672	77.60
Guía de Isora	1,561	8.85
Icod de Los Vinos	1,266	7.18
Granadilla de Abona	378	2.15
La Guancha	234	1.34
San Juan de La Rambla	223	1.26
Santiago del Teide	143	0.81
Los Realejos	62	0.35
Vilaflor	59	0.34
Garachico	20	0.11
Adeje	1	0.01
<b>TOTAL</b>	<b>17,619</b>	<b>100.00</b>

## **State property**

Of the land in the Park owned by the State, 1,296.5 ha are registered to the Autonomous Organisation of National Parks. The rest of the State-owned land, 70.5 ha, is registered to TURESPAÑA (Ministry of the Economy and the Exchequer) and includes the Parador de Las Cañadas del Teide.

## **Private property**

Private property constitutes a small percentage of the Park's land compared to the municipal and state property, totalling only around four hectares. This land is owned by the Sociedad Teleferico, S.A. and Telefónica de España, S.A.

## **5.b Protective designation**

---

The following is a list of the basic legislation affecting Teide National Park:

- Law 4/1989, March 27, on the Conservation of Protected Natural Spaces and Wild Fauna and Flora.
- Law 40/1997, November 5, that revises Law 4/1989, March 27, on the Conservation of Protected Natural Spaces and Wild Fauna and Flora.
- Law 41/1997, November 5, that revises Law 4/1989, March 27, on the Conservation of Protected Natural Spaces and Wild Fauna and Flora.
- Royal Decree 1803/1999, November 26, approving the National Parks Network Administration Plan.

The following is the legislation directly affecting the National Park (listed in chronological order):

- The January 22, 1954 Decree that creates Teide National Park.
- Law 5/1981, March 25, on the reclassification of Teide National Park.
- Decree 153/2002, October 24, approving the Teide National Park Management and Usage Administration Plan.





In addition, at an altitude above 2,400 m the Teide-Pico Viejo stratovolcano has been declared Natural Monument by Law 12/1994, December 19, on natural spaces in the Canary Islands, and reclassified as a Natural Monument by Legislative Decree 1/2000, May 8, approving the revised text of the Canary Islands Territorial Planning Law and the Natural Spaces in the Canary Islands Law. It has Conservation regulations according to the October 26, 2005 Resolution that Published the Accord that was reached by the Canary Islands Territorial Organisation and Environmental Commission during its 10 October 2005 session.

Regarding the management of Teide National Park, given its importance, the following considerations were made:

- As of the creation of Law 4/1989, March 27, on the conservation of protected natural spaces and wild fauna and flora, this material is jointly and equally competence of the General Administration of Spain (Ministry of the Environment) and the Autonomous Community of the Canary Islands, through the Mixed Management Commission of the Canarian National Parks. In addition, the Patronage of the Park participates, supports and helps to make decisions regarding its conservation. The Public Administration is represented within the Patronage, along with the other social actors implicated.
- Since the administration of Spain is increasingly decentralised, it is foreseen that by 2006 the management of its National Parks will become the exclusive competence of the autonomous communities, although the basic national legislation will be respected and the Spanish State will continue to coordinate in this area. As of the writing of this inscription proposal, the Mixed Management Commission of the Canarian National Parks still manages Teide National Park and the Patronage still participates, supports and helps to take decisions regarding the Park.
- The normal administration of this protected natural space is carried out by the National Park's technical team and this will not change when management is transferred to the Autonomous Community of the Canary Islands.

## 5.c Means of implementing protective measures

---

There are various means that guarantee the protection of Teide Natural Park but it is mainly based on applied legislation, the available material and human resources and inter-administration cooperation.

### **Legislation**

- Law 5/1981, March 25, on the Reclassification of Teide National Park.
- Decree 153/2002, October 24, approving the Teide National Park Management and Usage Administration Plan.

Law 5/1981 reclassifies Teide National Park and assigns it a special legal regime that is designed, among other things, to protect it, limit the rights to use its resources, etc. It also delimits a protective buffer zone in order to guarantee the protection of the natural resources that justify the creation of the National Park.

Decree 153/2002, October 24, approving the Teide National Park Management and Usage Administration Plan, contains the legal basis for the protection of the natural resources throughout but mainly in the following sections:

- Section 3. Management Criteria

This section establishes general management criteria relating to natural and cultural resources, public use and visitor attention, scientific research and resource monitoring, traditional uses and practices, infrastructures, equipment and facilities and also the Park's relationship with its surroundings.

- Section 4. Zonification

In order to make protecting the Park compatible with its public use, and to minimise possible negative impacts, the Park's territory is spatially distributed according to its capacity to absorb visitors in Reserve Zones, Restricted Use Zones, Moderate Use Zones and Special Use Zones.

The following table displays in hectares and percentages the zoning established for Teide National Park and at the end of this section its spatial distribution:





ZONIFICATION	AREA (ha)	AREA (%)
Reserve Zone	1,265	6.7
Restricted Use Zone	12,964	68.3
Moderate Use Zone	4,703	24.7
Special Use Zone	58	0.3
<b>TOTAL</b>	<b>18,990</b>	<b>100.0</b>

The following defines the uses and limitations of each of these zones:

### Reserve Zones

These areas need the highest possible level of protection because they contain extremely important natural and cultural values that because of their scarcity, fragility or rich biodiversity are of great interest to science. They can also include areas that do not have these characteristics but that are in a process of regeneration or are particularly dangerous for the public.

Its goal is to guarantee the maximum protection of its resources, allowing them to be studied without human influence on them.

They can only be accessed for scientific or management purposes. The following is strictly prohibited in these areas: vehicles and mechanical artifacts; any kind of exploitation; construction of infrastructure or facilities (including new paths and trails) except for signage; scientific markers or instrumentation; collecting biological, mineral or cultural material that has not been expressly authorised by the administration of the Park.

These zones are closed to public use except for hiking on paths expressly authorised by the Administration Plan and climbing on the Roque and Topo de la Grieta paths that are established in the Public Usage Plan or, when this area is covered with snow, for transit expressly authorised by the Park administration.

### Restricted Use Zones

These zones are highly natural areas that can handle moderate public use. Their natural and cultural values are reasonably well conserved.



*Poligonal soils*

Their objective is to guarantee the integral conservation of their values and resources and at the same time allow visitors to intimately enjoy the surroundings in the solitude that the Park offers.

The public is free to hike on these paths and trails. However, vehicles and mechanical artifacts are prohibited except for research and management purposes that have been duly authorised by the Park administration and restricted to existing paths and trails. Vehicles are authorised on the roads that cross them in accordance with the regulations established on the Administration Plan or the documents that develop it. Any other kind of activity will be regulated and controlled by the administration of the Park.

The use of barriers, signs, instruments and artifacts can be authorised if they are designed for the control, orientation and security of the visitors, if they have scientific or management uses or for the construction of rustic hiking paths. The construction of paths, buildings or permanent building facilities can not be authorised, except in the cases defined in the fifth paragraph of section 12.5.1 of the Management and Usage Administration Plan.

### **Moderate Use Zones**

These areas are dominated by a natural environment that is capable of accomodating more intense public use than the other zones. The conservation of resources, open air recreation and eduactional activites are compatible in these zones.

The objective of these zones is to integrate the conservation of resources, educational, interpretive and recreational public use, and traditional uses, minimising and monitoring the negative impacts that may occur.

The entire area is open to pedestrians. Authorised vehicles and mechanical artifacts on the roads, paths and trails may be regulated by the Park administration in accordance with the Administration Plan. Services, paths, small infrastructure and other elements exclusively related to public use, traditional practices, scientific research and management can be constructed. The surroundings will be respected at all times by using traditional materials and methods, minimising its environmental impact and integrating them as much as possible into their environs. Their construction must be contemplated in the Administration Plan and article 5.3 of Law 5/1981.





## Special Use Zones

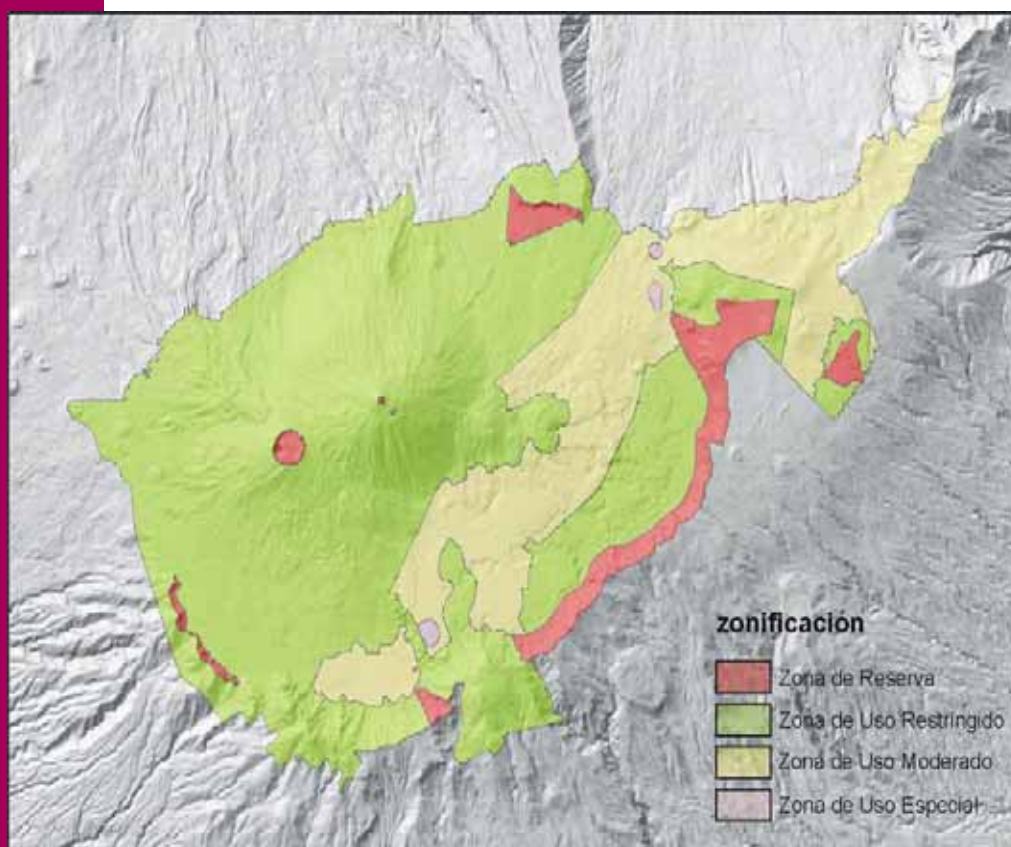
These are small areas where larger structures and facilities needed for the management, administration and public use of the Park are located.

Their goal is to create an area where services and facilities that are necessary for the public use, management and administration can be concentrated with the least impact, including preexisting installations that are necessary to maintain public services that are in accordance with the purpose of the Park.

These areas are open to the public except for spaces located in their interior. In addition to ordinary urban planning, proposed construction in these areas must respect the regulations contained on the Administration Plan and the documents that develop it. The environment must be respected as much as possible by using traditional materials and methods that integrate the construction into its surroundings. Buildings can only have one story, with the exception of those that already exist.

The service and parking areas in Teide National Park that are contemplated by the Access Master Plan will be included in Special Use Zones.

The following figure shows the spatial distribution of the different zones that are described above.



- Section 5. Protection legislation

This legislation differentiates between uses subject to administrative authorisation and unauthorised uses that are in violation of Law 4/1989, March 27, on the Conservation of Protected Natural Spaces and Wild Fauna and Flora.

The following table displays uses subject to administrative authorisation that are carried out through pre-established conditions:

✓ Uses related to professional, commercial or mercantile film, radio, television, video, publicity or analogous
✓ The celebration of (multitudinous) special acts
✓ Research that is carried out within the National Park
✓ All new commercial activities within a permanent establishment within the National Park
✓ Working as an interpretive guide or tourist guide within the Park
The following exploitations:
✓ Water exploitation
✓ Traditional exploitation of wild rabbits
✓ Apiculture
✓ The extraction of coloured soils and flower collecting.
✓ The use of rat poison or pesticides within the buildings.
✓ The organisation and celebration of any kind of act that supposes a massive concentration of people in a certain place or area.
The following activities:
✓ Speleology
✓ Mountain activities in Reserve Zones when the terrain is covered with snow and in the Restricted Use Zones off the paths.
✓ Climbing to the crater of Mt. Teide from the La Rambleta path.
✓ Camping
✓ Guided bike tours on the Filo path
✓ Some kinds of flying when it is adequately justified
✓ Any construction and the renovation, adaptation or modification of existing infrastructure.
✓ The use of the name “Teide National Park” for any commercial use.

### **Material means**

The materials that the administration uses to protect the Park include signs that indicate the National Park’s boundaries, trails and infrastructure. In addition, barriers are placed at the



*Barriers*



accesses to paths in order to protect the most at-risk resources.

### **Human resources**

Park employees ensure that the stipulations of the Teide National Park Management and Usage Administration Plan are followed. There are 18 people assigned to this task including environmental agents, forest rangers and security guards. These personnel are increased at certain times of the year in order to closely monitor activities such as the hunting campaigns to control the mouflon and rabbit populations.

They also are supported by the Nature Protection Service (SEPRONA) of the Guardia Civil.

### **Inter-administration cooperation**

The administrations that manage Teide National Park and the Corona Forestal Nature Park cooperate and coordinate their activities in order to resolve different typology of problems that affect both protected natural spaces. In addition, it participated in the making of the planning document that will regulate the life of this Natural Park, so that it does not contradict the regulations of the Teide National Park's Management and Usage Administration Plan.

Finally, personnel in the visitor centres and information points explain to visitors why it is important to conserve the Park and the usage limitations that are necessary to achieve this goal. This is also the goal of the public use programmes that the administration develops. In addition, the informative material that is available to the public in the different infrastructures includes the legislation that governs this protected natural space.



*Teide seen from La Gomera*

## 5.d Existing plans related to municipality and region in which the property is located

The following table displays the planning documents elaborated by the Cabildo of Tenerife, including the dates they were approved:

PLAN	APPROVAL DATE	INSTITUTION THAT PREPARED THE PLAN
<b>General Plan for the Public Use of the Island of Tenerife</b>	Approved by the Plenum of the Cabildo of Tenerife on July 24, 2002.	Cabildo of Tenerife
<b>Tenerife Insular Planning Document (PIOT)</b>	Approved by Decree 150/2002, on October 16.	Cabildo of Tenerife
<b>Tenerife Insular Tourism Planning Special Territorial Plan</b>	Definitively approved in part on April 6, 2005 by the Territorial and Environmental Planning Commission of the Canary Islands (COTMAC)	Cabildo of Tenerife

These plans do not affect Teide National Park because the management of the National Park is based on Decree 153/2002, October 24. Nevertheless, the Tenerife Insular Planning Document (PIOT), which organises the usage of the island's resources, does regulate the central region of the island which includes Teide National Park; however, this law does not contradict the stipulations of the Management and Usage Administration Plan.

The following articles of the PIOT refer to Teide National Park:

- Chapter 1: General Aspects of the Territorial Planning Model
  - Section 3. The Territorial Planning Model
    - ◆ Articles 2.1.3.1. and 2.1.3.5.
- Chapter 2: District Planning Models
  - Section 4. Planning model for Abona
    - ◆ Articles 2.2.4.5. The road and transportation model
  - Section 9. Planning model for the Central Mountain Mass
    - ◆ Articles 2.2.9.1., 2.2.9.2. and 2.2.9.3. and 2.2.9.4.
- Chapter 4: Singular Infrastructure Operations
  - Section 1. General Information
    - ◆ Articles 2.4.1.2. 8
  - Section 9. Central mountain mass service complex
    - ◆ Articles 2.4.9.1., 2.4.9.2., 2.4.9.3. and 2.4.9.4., 2.4.9.5. and 2.4.9.6.





## **5.e Property management plan or other management system**

The Teide National Park Management Plan is contained within Decree 153/2002, October 24, approving the Management and Usage Administration Plan of Teide National Park. Nevertheless, this protected natural space has had a planning document since 1984, approved by Royal Decree on November 14 which after being reviewed was repealed and replaced by the Administration Plan mentioned above.

The following section describes the objectives of Teide National Park and the objectives of the Management and Usage Administration Plan, following the content of the cited Decree:

### ***Objectives of Teide National Park***

The general objectives of Teide National Park are the following:

I. Protect the landscape, the integrity of the autochthonous fauna, flora and vegetation, in other words, the totality of its biodiversity, geological value, waters and atmosphere and, ultimately, maintain its functional dynamic and structure, as well as the environmental services of the ecosystems that comprise the Park.

II. Protect the integrity of its archaeological resources and of its important cultural values.

III. Provide ecological stability and diversity perpetuating its biotic communities and genetic resources in as natural state as possible, paying special attention to endangered resources.

IV. Facilitate scientific research and the study of the Park's resources, as well as the surveillance and prevention of volcanic eruptions.

V. Facilitate public enjoyment of the natural space based on the Park's values and in a way that is compatible with its preservation.

VI. Promote environmental education and public knowledge of the ecological and cultural values of the Park and its meaning.

VII. Promote the socio-economic development of the communities in its environment, especially via the promotion of sustainable development programs and activities.

VIII. Extinguish as soon as possible the traditional uses and *derechos reales* (the right to exploit something that a property

produces or the right to use the property in a certain way) in the interior of the Park that are incompatible with its objectives.

IX. Promote the coordination of the actions that take place outside of the Park but that may affect the Park and viceversa, with the aim of achieving that greatest synergy possible among all activities to the benefit of the Park and the island.

X. Provide the National Park Network with an example of general interest for Spain and highly representative of the volcanic processes and ecosystems associated with the high mountain environment of the Macronesian region.

XI. Provide an example of the outstanding value of Spanish-Macronesian nature for European and world heritage, promote and maintain its foreign acknowledgment and participate in international programs of nature conservation.

The Park's management is guided by the fulfilment of these objectives, established according to Law 4/1989, March 27, on the Conservation of Natural Spaces and Wild Flora and Fauna, modified by Law 41/1997; Law 5/1981, on the Reclassification of Teide National Park; the international concept of National Park defined by the UICN in Buenos Aires (1994) and the policies of the National Park Network established in the National Park Network Administration Plan.

### ***Objectives of the Management and Usage Administration Plan***

The objectives to be fulfilled by the current Administration Plan, which will be valid for six years, are the following:

A.- Regarding the conservation of natural and cultural resources.

1. Improve the survival capacity of endangered animal and plant species and develop an ecological monitoring program that can make an integrated diagnosis of the state of the biodiversity and evaluate the effect that administration activities will have on the environment.

2. Establish a plan to progressively control the mouflon, the rabbit and the rest of the mammals that have been introduced into the Park, directed toward the total eradication of the first and the maintenance of the rest of them at a level that does not suppose a risk to the Park's flora.

3. Develop the measures necessary to protect all of the Park's archaeological and ethnographic resources, establishing sufficient coordination between the competent institutions to achieve this goal.





*Teide seen from  
Llano de Las Mesas*

4. Adopt the measures necessary to incorporate into the National Park the private land of the summits of Vilaflor, the group of houses in El Portillo and the Las Cumbre estate owned by the Ministry of Defence, according to the accord reached by the Council of Ministers on July 2, 1999.

B.- Regarding public use and planning.

5. Regulate and plan the massive visits in a way that is compatible with the conservation of the Park's resources and the dissemination of the Park's values.

6. Regulate outdoor sporting activities that are compatible with the purpose of the Park.

7. Regulate the use of the sections of the TF-21 and TF-38 county roads that pass through the Park with the goal of making it compatible with the Park's objectives.

8. Divulge the resources, services and rules of the Park so that the public understands them better and implicate the Park's users and local population in its conservation.

C.- Regarding research of Park values and their disclosure.

9. Disclose information in order to facilitate the management of the Park's resources, particularly on biological and phytosanitary aspects of endangered flora; on basic knowledge of invertebrate populations; on the basic concepts of biology and the impact that mammals introduced into the Park have on archaeological and ethnographic resources, as well as how to establish a way to keep track of the environment and the visits, and the research necessary to establish the best way to gauge the Park's ecosystems.

10. Promote research and, in general, educational, scientific and cultural activities so that the knowledge and disclosure of the objectives and values of the Park reinforce the fulfilment of the goals set by Law 5/1981 on the Reclassification of Teide National Park.

D.- Regarding traditional uses and exploitations.

11. Regulate the uses of and exploitations derived from natural resources to make them more compatible with their conservation.

E.- Regarding the infrastructure, provisions and facilities.

12. Reduce the amount of infrastructure and facilities located within the Park that are incompatible with the Park's goals.

13. Dictate the measures necessary to promote a greater integration and smaller impact of the infrastructure, provisions and facilities that may exist within the Park.

14. Coordinate the management of infrastructure by their corresponding owners with the goal of adapting them as much as possible to the purposes of the Park.

F.- Regarding the Park's relationship with its surroundings

15. Integrate the management of the Park with the adjacent land, especially with public properties belonging to the State.

16. Promote the cooperation of institutions, entities and individuals to reduce impacts on the natural space that come from outside of the Park.

## 5.f Sources and levels of finance

### Financing

As of the elaboration of this report, the financing of Teide National Park comes entirely from the State via its General Budgets and, more specifically, from the budget of the Ministry of the Environment on which the Autonomous Organisation of National Parks depends.

In the end, it is this organisation that assigns and distributes the budget of Teide National Park. In general terms the Park's budget for the last five years is displayed in the following table:

YEAR	CHAPTER 2	CHAPTER 6	TOTAL
2001	262,035,000 pts,	211,871,896 pts,	473,906,896 pts,
2002	2,979,514.11 €	1,738,068.47 €	4,717,582.58 €
2003	1,754,382.93 €	1,944,316.01 €	3,698,698.94 €
2004	1,880,051.26 €	2,653,295.73 €	4,533,346.99 €
2005	2,028,051.72 €	2,852,830.44 €	4,880,882.16 €

Chapter 2 corresponds to "Commercial Expenditures", while Chapter 6 refers to "Investments".

The National Park also receives other budget contributions from the Star Programs of the Autonomous Organisation of National Parks that finance specific Park projects selected and managed by the organisation's administration.



## Grants

The Autonomous Organisation of National Parks allots part of its budget to subsidise projects and activities of institutions and individuals that are integrated within the limits of National Parks or in its socio-economic areas of influence. These economic grants are earmarked for the improvement of infrastructure, social and cultural activities and job creation in the local environment and they are regulated by an annual call.

They are allotted to local governments, businesses, private owners and non-profit organisations that update conservation material and sustainable use in the socio-economic area of influence of the National Park.

The following table indicates the grants given during 2001-2004 and their distribution:

YEARS/ DISTRIBUTION OF GRANTS GIVEN	2001 (pts.)	2002 (€)	2003 (€)	2004 (€)
<b>Local Governments</b>	124,442,314	539,109.87	200,726.17	675,808.91
<b>Businesses</b>	4,900,000	51,278.10	62,026.47	15,080.36
<b>Private owners</b>	7,055,000	28,388.33	47,622.22	72,780.19
<b>Not for profit organisations</b>	6,815,000	21,176.26	60,347.65	11,500.00
<b>TOTAL</b>	143,212,814	639,952.26	370,722.51	775,169.46



## 5.g Sources of expertise and training in conservation and management techniques

---

Regarding the expertise and training of the personnel who contribute to the management of Teide National Park, a distinction has to be made between the personnel of the National Park's administration, who can be either permanent state workers or workers under contract, and people who are employees of public or private companies that are contracted to do specific work or projects for the Park on an occasional or temporary basis.

The expertise and training of the personnel of the Park is evaluated and demonstrated from the moment that they are given their position because everyone who works in a public administration has to pass state exams and personal-merit evaluations along with other candidates. This selection process more than ensures an adequate level of training and expertise in the position that the candidate is trying to win, in this case the environment in general and nature conservation in particular.

In order to take part in the selection process a candidate has to have certain academic degrees and once the process has been successfully completed, the candidate becomes a member of the personnel of the State Administration.

Park personnel that have completed this process also have access to different professional training programmes that update and deepen the knowledge, abilities and tools that they need to give better public service that in this case includes better management of Teide National Park.

Because these annual training programs have diverse content, all of the public employees can participate regardless of their category and academic degrees.

The institutional training for the personnel of Teide National Park is divided into three categories:

- Generic State Administration training, normally given by the National Institute of the Public Administration (INAP).
- Professional training organised by the Ministry of the Environment.
- Training for the personnel of the Autonomous Organisation of National Parks.

During the last five years the personnel of Teide National Park (in their different categories) have had access to the following courses:





- Conservation and handling of natural resources.
- Public use, information, interpretation and environmental education.
- Legislation.
- Budget, finances and administrative management.
- Management and administration of personnel.
- Computer programmes.
- Understanding and handling tools, equipment and specific technology related to their jobs.

In addition to this professional training system, the personnel of Teide National Park also habitually participate in forums, meetings, seminars, etc. organised by the Autonomous Organisation of National Parks or other institutions or entities that allow for the exchange of experiences, information on specific areas of work, updates of the general job knowledge and new technologies that can be applied to the daily management of protected natural spaces.

As indicated earlier all of this training corresponds to the competence and training of the Park personnel who are also incorporated into the State Administration.

The employees of external companies contracted by the Park administration to work in the National must have the level of expertise and training that was specified in the contract. These specifications define the level of quality that this contracted work must meet and therefore indirectly indicate a certain profile of expertise and training that their personnel must have.

## **5.h Visitor facilities and statistics**

---

### ***Visitors to Teide National Park***

The number of visitors to the Park is measured by gauges installed in the four entrances to the Park that have been counting vehicles since 1996. These mechanisms monitor the number of vehicles that pass by them, distinguishing between cars and buses. The average number of people in these vehicles is obtained by surveys and direct verification by Park personnel. Before 1996 the data was obtained by doing counts and statistics without mechanical assistance and only measuring visits between 9 a.m. and 4:15 p.m. This accounts for the quantitative jump that can be seen in the following table in the number of visitors to the Park from 1995 to 1996 (1995-2004).

YEAR	VISITORS
1995	2,600,000
1996	3,182,420
1997	3,237,910
1998	3,402,391
1999	3,773,990
2000	3,689,649
2001	3,581,164
2002	3,488,622
2003	3,364,873
2004	3,540,195

There has been a continuous decline in the number of visitors to the National Park since 1999, falling from 3,773,990 to 3,364,873 in 2003. Although last year (2004) the number rose to 3,540,195, it is still much lower (almost 235,000 less) than 1999, the year with the highest number of visitors.

### ***El Portillo Visitor Centre***

Located in the north access to the Park, this remodelled centre is installed in an inconspicuous building (705 m<sup>2</sup> between both stories) that is perfectly adapted to its environment. 560 m<sup>2</sup> of the surface area is dedicated to an exhibit area with a capacity of 120 people where information on the natural resources and processes of the Park is displayed. This information helps the visitor to understand the geological history of the Park, the formation of the landscape, the adaptations of the flora and fauna to the environment, the special climate of the area, etc. There is also an audio-visual presentation explaining the origin of the Canary Islands in general, and Las Cañadas and the Mt. Teide in particular, that is projected continually in a room that can seat up to 65 people. This centre, opened in 1977, was a pioneer in Spain and has restrooms, bookstore and parking spaces.

### ***Cañada Blanca Visitor Centre***

This centre is located in a wing of the Parador de Las Cañadas del Teide (hotel) in a beautiful area in front of Los Roques de García. This centre has a surface area of 182 m<sup>2</sup> and a capacity for 55 people. In this centre information is displayed explaining the interaction of human beings with Las Cañadas, the evolution of the different ways of life throughout history, the uses of the environment and the long history of research done on Mt. Teide. The centre has restrooms, a bookstore and parking spaces. The centre is currently being expanded to include a semi-buried projection room.



*El Portillo Visitor Centre*



*Cañada Blanca Visitor Centre*



### ***Boca Tauce Information Booth***

This booth is located in the south access to the Park at the crossroads between county road TF-21 and TF-38. It was opened in April of 1994. Every year around 25,000 people use the Boca Tauce Information Booth.

### ***El Portillo Botanic Garden***

In 1986 a botanic garden was created to exhibit the flora of Las Cañadas near the El Portillo Visitor Centre. The garden, which measures 4 hectares, 22 areas and 50 centiares, has been supplied with specimens produced in a nursery with the idea of integrating them with existing vegetation and identifying the species so that the visitors can learn about them. The original design of the garden respected the environment and the species found there as much as possible, taking care to make sure that its outer appearance was as natural and rustic as possible. At the moment more than 60% of the flora native to the Park is represented in the garden. In order to walk through the garden, a pathway of 1,705 m was custom-made with a capacity for 140 people.



*Botanic Garden*

### ***El Portillo fire fighting and first aid post***

This facility, located at the 33 km point of country road TF-21 (between El Portillo Bajo and El Portillo Alto), quarters personnel, vehicles and material to fight forest fires as well as a first aid post that is currently run by the Red Cross. This post has served as a base of operation for first aid and assistance in case of accidents in the National Park since 1987. The presence of this post ensures much faster emergency assistance than the far-off hospital services can provide, extremely important in a Park with the amount of visitors and special characteristics (altitude, orography, climate, etc.) of Teide National Park.

### ***Emilio Fernández Muñoz Nature Activities Centre***

This popular activity centre is located outside of Teide National Park in Monte del Estado Cumbres del Realejo Bajo but managed by the Park's Administration. The centre was built in a pine mountain at an altitude of 1,600 m, below the currents of the Elysian winds, and because it has many didactic possibilities it is an ideal place to impart environmental education. In fact, it is used by many of the island's educational centres, mostly for activities related to the examination of the environment and the conservation of nature. Occasionally it is even used as a practice classroom. The centre has a capacity of 80 people.

Among the visitors (more than 2,500 people and around 60 groups annually) there were more groups from educational centres

then any other organisation (municipal, social, youth, NGOs, religious, etc.). The facility is occupied an average of 225 days a year, the average stay was four days and the average size of the group was 52 people.

The informative material that is distributed to Park visitors includes a general information pamphlet (available in spanish, english, german and french), a pamphlet of Park routes, a pamphlet that explains the effect that the mouflon has on the Park's vegetation, a pamphlet that describes the botanical garden and, somewhat more technical, the Mountain Climbing Guide published by the Canarian Mountain Climbing Federation. The Autonomous Organisation of National Parks has also published a Visitor's Guide to the Park in spanish, english, german and french.

Other services offered to the visitors by private companies and other administrative units that don't depend on Teide National Park include the following:

- Altavista Refuge: located at an altitude of 3,264 m, it can house up to 50 people and is managed by the Cabildo of Tenerife.
- Parador de Las Cañadas del Teide: located next to the Cañada Blanca Visitor Centre, it has 37 rooms, as well as a restaurant and cafeteria.
- Teide Cable Car: located at the 42.6 km point of the TF-21 highway, in the cable car base station. Teleférico del Pico de Teide, S.A., offers restaurant service (with a capacity for 130 diners) and a cafeteria. The company has the right to manage this service until 2037.
- In the Buffer Zone that surrounds the Park there are several restaurants that are owned and run by private companies: *El Portillo* (located at the crossroads of country roads TF-21 and TF-24, in El Portillo Bajo, with a capacity to seat 30 diners), *El Mesón* (with a capacity to seat 360 people), *Teide* (with a capacity of 400 diners) and *La Bamby* (with a capacity for 340 diners), the last three are located in El Portillo Alto.

### **5.i Policies and programmes related to the presentation and promotion of the property**

---

The public use programmes in Teide National Park are:

- Official education programmes.
- General public programme.



*La Ruleta lookout*



*First Las Cañadas guide*

### **Programs designed for the scholastic community in Tenerife (official education).**

The educational activities are divided into two large groups:

#### **Activities carried out in the Park**

- Educational excursions (with students and teachers in different parts of the Park depending on the objectives of the educational centre, where they come from and the time available).
- Environmental workshops (carried out in the countryside or in the El Portillo Botanical Garden).
- Training excursions for teachers (supporting the activities organised by some Teachers Centres and educational centres).
- Elaboration of didactic and informational material (a map of the trail network, articles in different magazines, the Park's Visitor's Guide, corrections to the website, notebooks, etc.).

#### **Activities done outside of the Park**

- Workshops, talks and lectures in educational centres (developing topics related to natural spaces in general and Teide National Park in particular).
- Environmental education activities in the Emilio Fernández Muñoz Nature Activities Centre (supporting activities programmed by the users and carrying out activities designed by the Park personnel).
- Collaboration in training courses for teachers (giving talks, workshops, etc. in the teacher centres that solicit them).

Students from educational centres in Tenerife (2003/04 school year, data provided by the Canarian Government's Education Council):

<b>Preschool</b>	22,746
<b>Primary</b> (from 1 <sup>st</sup> to 6 <sup>th</sup> )*	49,959
<b>ESO</b> (from 1 <sup>st</sup> to 4 <sup>th</sup> )	38,506
<b>Bachillerato</b>	13,118
<b>Training cycles</b>	10,975
<b>Special Education</b>	498

\*Approximately 16,653 from 5th and 6th.

There are 113,056 students (79,750 if only students in the 5<sup>th</sup> grade of Primary school and above are counted) who are

potential users of the Environmental Education Support Service in Teide National Park. Preschool and the first few years of primary school are not included because this service not designed for students in those age groups. This does not mean that these groups are not attended to, but it depends on whether or not there are openings in the schedule because the higher grades are always given priority. Nevertheless, there are one-classroom schools, especially in rural areas, where students from different grades are taught in the same classroom and therefore they organise activities for all the different age groups.

The population of the Canary Islands is very young and their educational centres provide an environment and infrastructure that facilitate activities for children and adolescents. Therefore, it stands to reason that a well planned environmental education programme directed at this sector of society will eventually be translated into a good environmental education for a large part of the population that will also make up the majority of the citizens and leaders of the near future.

### Objectives

- Explain the cultural and natural heritage of Teide National Park.
- Give essential information about our landscape.
- Help students to learn about the diverse ecosystems that exist on the island, as well as its historical, socio-economic, anthropological and cultural aspects.
- Create awareness for the need to protect the environment and respect nature.
- Use scientific methods and active participation that go beyond conventional classroom education.
- Give students the opportunity to relate to their classmates and teachers in an open and informal social setting.
- Foment collaboration in maintaining and cleaning the environment among the students.

### Methodology

The students should be introduced to the environment through their daily experiences so that their personal perceptions can intervene in the learning process. In addition, the study of the terrain should be promoted implying special methods of placement and use of pedagogical material (particularly audiovisual). This is essentially based on the discovery method in any of its forms.

Group learning should also be promoted because creating common goals and working in teams allows the students to experience new kinds of social relationships. Practicing being part of a group is fundamental for young people to learn how to be



*Talk given to students*



*Montaña Blanca path*



*Talks*

responsible as well as how to collectively define their immediate surroundings.

Basic activities: talks and guided excursions directed toward the scholastic community of the island.

The talks, usually given on Mondays, introduce the students to nature and the human activities carried out in Teide National Park. These talks are accompanied by approximately 60 slides, a number that may vary, depending on the level of interest that the group has in the topic. At the moment it is also possible to use computer projectors.

After hearing the talk given in the educational centre, the group of students, accompanied by teachers, walk through a route in the Park accompanied by guides that specialise in scholastic activities. This service is generally imparted on Tuesday or Friday within the scholastic calendar.

Although some may think that only teachers of material directly related to these kinds of spaces (biology, geography, etc.) are interested in these services offered by the Park, in reality teachers of all kinds are excited by the possibility of relating nature to Maths, Language Studies or Physical Education, to name a few.

The recipients are Tenerife educational centres with students of all ages, although this service is mostly directed toward students from the 5<sup>th</sup> grade of primary school on (5<sup>th</sup> and 6<sup>th</sup> grade Primary Education, 1<sup>st</sup> to 4<sup>th</sup> grade of ESO, 1<sup>st</sup> and 2<sup>nd</sup> grade of *Bachillerato* and Training Cycles).

During the 2003-04 school year 147 talks were given in 99 different educational centres in 26 municipalities of the island to 7,518 students and 803 teachers. There were also 111 guided excursions given to 5,457 students and 340 teachers from 82 different educational centres of those 26 municipalities.

During the 2003-04 school year the Park worked with educational centres from 26 of the 31 municipalities in the island (84%).

99 of the 380 educational centres in the island participated in this programme, more than 26%, although this percentage would increase considerably if the centres that are not interested in this service or not capable of using it, or those whose students are too young to take part in its activities (preschool, the first years of primary school), or those who do not support certain extra-curricular activities were taken out of the calculation.

The school year has at most 160 days a year (discounting weekends and holidays) and last year personnel from Teide

National Park gave 147 talks (an activity that normally takes place on a Monday) and 111 guided excursions in the Park.

The difference in the number of students who were given a talk (7,518) and those that were able to do a guided excursion (5,457) is due to the fact that some educational centres did not want to or could not travel to the Park and so they only asked for a talk in their own centre.

### **General Public Programme**

There is a general consensus to try and foment new attitudes in the general public toward the environment by making people more aware and understanding of their natural surroundings. More than create a passive conservation attitude, the idea is to increase the level of participation and solidarity.

The goal is not a limited educational focus designed only to transmit information, but rather also to provoke an affective reaction that is fundamental in creating permanent behaviour. In this sense, the idea is to develop an affective component that helps to change attitudes.

### Objectives

- Encourage interest (not in-depth education) in those that receive the information.
- Stimulate the senses as the most direct way of learning.
- Instil interest and curiosity about nature and its conservation, particularly in the National Park.

### Infrastructures

- El Portillo Visitor Centre.
- Cañada Blanca Visitor Centre.
- Boca Tauce Information Booth.
- Botanical Garden.
- Emilio Fernández Muñoz Nature Activities Centre (CANEFM).
- El Portillo Office.
- Administrative Office in Santa Cruz de Tenerife.
- Trail network (21 in the main network and 14 secondary trails).
- All others where Park personnel are present, including those that are not managed by the Park Administration.

### Materials and facilities

- Signage: information and orientation signs, path indicators, plaques, etc.



*Mountain climbing*



- Information tables located at the most interesting points of the Park. At the moment there are 26.
- Publications: pamphlets, maps, guides, notebooks, etc.

#### Main activities

- Excursions guided by specialised personnel and excursions where the visitors guide themselves. Within the Trail Network there are many paths that visitors can follow without the need of a guide by following the indicators installed throughout the trail and by using the available material: pamphlets, written guides, etc.
- Tours of the facilities and the entire Park.
- Talks and lectures to associations, groups, etc.
- News and attention for people who petition services (general information, services and facilities, activities, etc.)
- Training.
- Promotion and diffusion.

#### Summary of the guided excursions carried out for the general public (2004)

A total of 617 guided excursions were carried out (on foot and in vehicles) in which 6,843 people took part, an average of 11 people per excursion. The guided excursions are free and a large percentage of these users (between 10 and 25%) belong to educational centres, mostly from Tenerife but also from other islands and even the Spanish mainland and the Balearic Islands and, to a lesser degree, foreign countries. The excursions done with vehicles mostly involved groups of handicapped people.

There are counters installed in the park's main trails in order to know the number of visitors that use each of them. Because of its fragility and low capacity, the access to the Telesforo Bravo path that connects La Rambleta (3,350 m) with the peak of Mt. Teide (3,718 m) is restricted: a permit is necessary to travel by this path.

In 2004 14,055 permits for 43,198 people were emitted. The number of people that spent the night in the Altavista Refuge (a facility managed by the Cabildo of Tenerife) and later climb to the peak in the morning (around 7,000 people a year according to the Cabildo of Tenerife) should be added to the first number.

Related to the public use of the park, in the office located in Santa Cruz de Tenerife more than 15,000 consultations were made in 2004 (telephone calls, letters, fax or individuals), without counting the people who went to the office only to ask for a permit to climb the peak of Mt. Teide.



*Guided excursion*

## **Training Programme**

Because there are so many visitors to Teide National only a small portion of them are actually attended to by Park personnel or use the facilities of the National Park and it is a constant challenge to attend to as many of them as possible. The Park tries to make the quality of the visits and the information that it gives as outstanding as the natural space itself. This is the reason why (in addition to complying with the Management and Usage Administration Plan) for six years the Park has organised a Teide National Park guide-certification course designed for professionals who want to be guides on Mt. Teide without discrediting any official degrees that have been certified by Administrations that are competent in this material. The goal is to assemble forces that help visitors to enjoy this natural heritage while reducing the negative impact that these activities may have since the guide also acts to promote the conservation of the Park. The possibility that they used interpretive techniques doesn't depend exclusively on us, but this training does reveal the magnificent possibilities to interpret the heritage in tourist activities. In 2004 the sixth edition of the Teide National Park guide-certification course was held.

In addition to these courses for guides, the last few years the park has also convened courses principally directed at the local population with the goal of informing and involving society in the understanding and management of this protected space. Some of these courses are: "Interpretation in Protected Natural Spaces", "Planning in Protected Natural Spaces", "Public use of Teide National Park" and "Control of Introduced Herbivores".

In 2005 the following courses will be imparted: "Teide National Park Guide Certification" (7<sup>th</sup> Edition) and "Risk prevention, security and first aid in the high mountain".

As far as training Park personnel, in addition to the training courses organised by other administrative units that are attended by the workers, sessions to update their knowledge are also held in order to exchange information between different Park departments and to give information about the work and reports done internally and externally so that all of the personnel is as up to date as possible on the characteristics and activities of the Park and can then transmit this information to the public.

## **Practice classes and volunteers**

Ever since Central Services started the Volunteer Action Plan in the National Parks Network, each year a number of young people collaborate with Teide National Park as volunteers. In September of 2002, 18 volunteers participated in these activities under the supervision of a coordinator from the Spanish Ornithology Society (SEO) and, of course, personnel from the



*Guided excursion in vehicle*



Park. In 2003, 9 volunteers collaborated with the Park, once again with the collaboration of the SEO, and again in 2004 with 8 volunteers. The volunteer programs generally take place in July and August, with three major groups of activities: managing flowers, public use program and managing fauna.

Every year various students or graduates do practice classes in Teide National Park, once they have signed a commitment to do so with the Autonomous Organisation of National Parks. Students have participated from the following universities: University of Salamanca, University Rey Juan Carlos de Madrid and the University of La Laguna.

In addition, there are agreements with the University of La Laguna and the Canarian Government's Agriculture, Livestock, Fish and Food Council to let their students do practice classes in the National Park. Specifically, eleven students from the Higher Education Centre of the University of La Laguna did practice classes in the Park (2001-02 school year). In following years a similar number of students have participated in practice classes in the Park; this year (2004-05) three students from the University of La Laguna are signed up for these activities.

Moreover, students from middle education institutes in Tenerife (mostly related with nature sports activities) have also participated in practice classes in the Park with the aid of Park personnel.

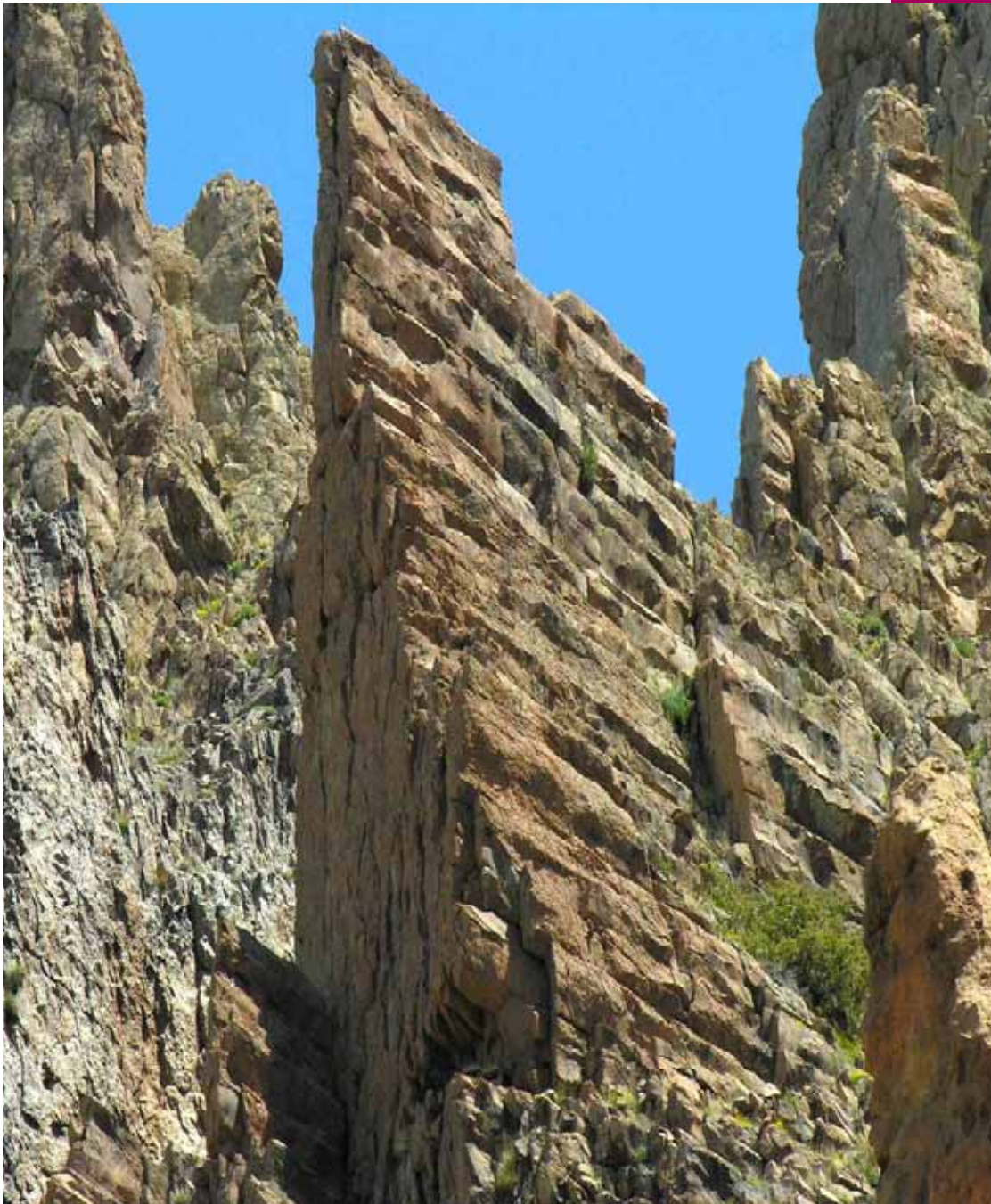
It is also common for associations and organisations in Tenerife to participate in campaigns to build awareness organised in conjunction with the National Park to remove waste from its grounds. Some of the most important collaborations are with the Canarian and Tenerife Hunting Federations, Canarian and Tenerife Mountain Climbing Federations, hunters associations, etc.

It should also be highlighted that through the corresponding accords a few years ago the National Park allowed conscientious objectors to do social work in the Park as a substitute for serving in the military. Now that there is new legislation that makes military service professional and non-mandatory, this offer is no longer valid.

### ***Promotion***

Among the promotional activities of the Park some of the most important are giving talks, participating in seminars, courses, conferences, symposiums and fairs (for example, the Ecological and Rural Environment Fair organised every year by the Municipality of La Orotava); carrying out informational campaigns (for example, the anniversary of the declaration of Teide or the

acts to commemorate the 50<sup>th</sup> anniversary of the National Park, that will be prolonged this year to include a commemorative exhibit) or organising writing and drawing contests whose objective is to promote interest in Teide National Park among the scholastic community of Tenerife (this year the 13<sup>th</sup> edition was held).



*Roques de García*



## 5.j Staffing levels

---

Currently, Teide National Park has a staff of 23 workers: 11 permanent state workers and 12 are contracted labour.

These workers are categorised as follows:

- 4 Technicians.
- 7 Office Workers.
- 6 Environmental Agents and Park Rangers.
- 3 Maintenance and others.
- 3 Cleaning.

An important proportion of the activities in the Park are developed by companies under the supervision of the Park staff. In this way it is necessary to point out that the human resources contracted by these companies for the Park activities are:

- 9 Technicians.
- 2 Office Workers.
- 12 Surveillance.
- 14 Public Use (reporters and guides).
- 77 Cleaning, maintenance, forest fire control and others.

